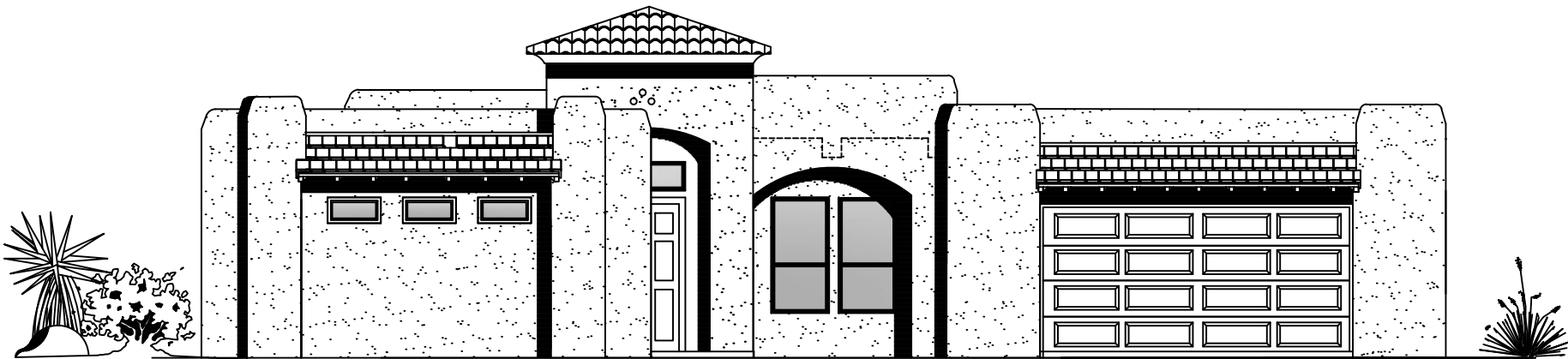


# KIM BROOKS

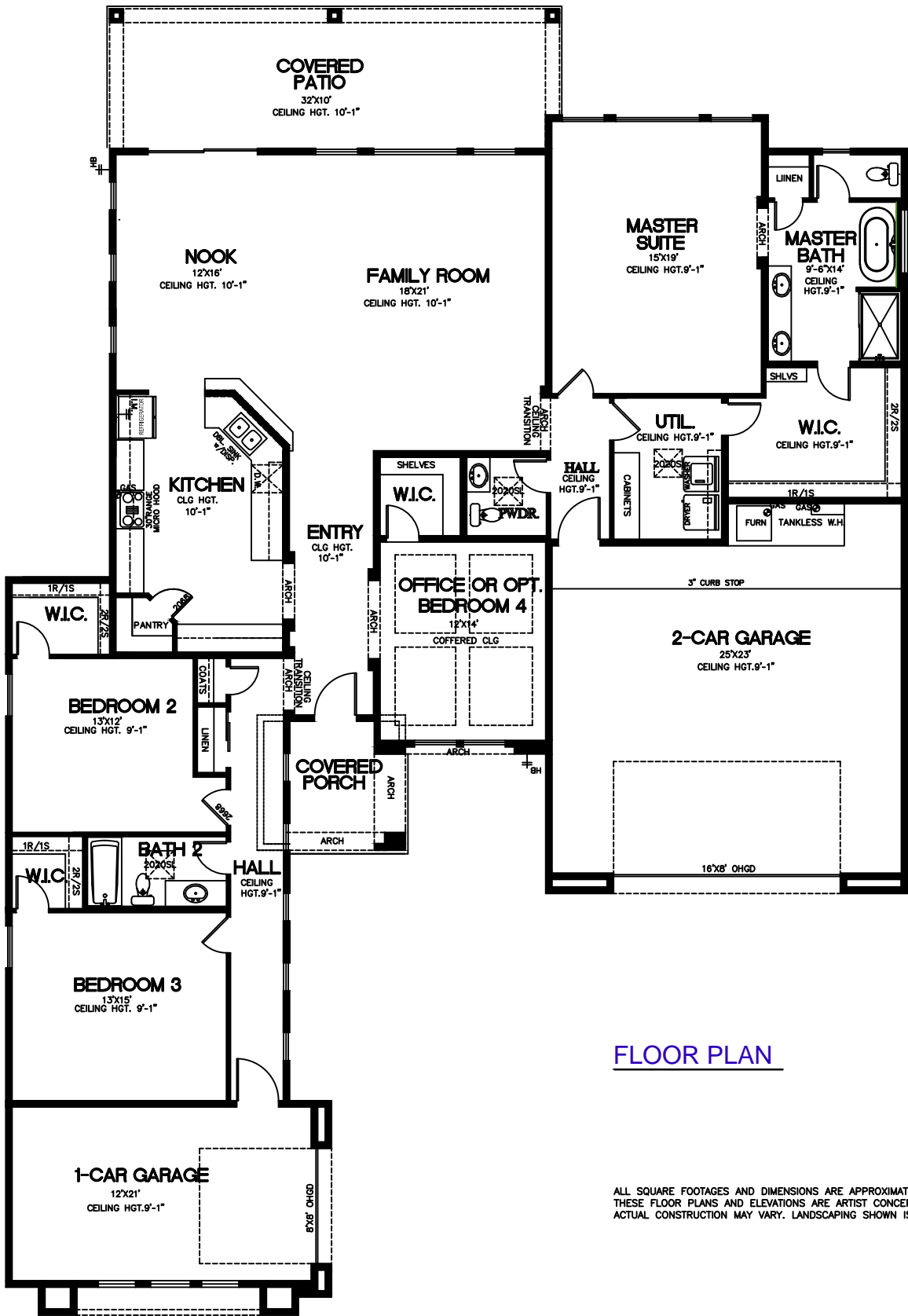
A TRUSTED LOCALLY FAMILY OWNED  
AND OPERATED COMPANY SINCE 1999

## SAN JUAN-B

- 2692 SQ. FT
- 3-BEDROOMS
  - 2 FULL BATHS
  - POWDER ROOM
  - WALK-IN PANTRY
  - OFFICE/BDRM 4
  - SPLIT 3-CAR GARAGE
  - COVERED PATIO



FRONT ELEVATION



FLOOR PLAN

ALL SQUARE FOOTAGES AND DIMENSIONS ARE APPROXIMATE.  
THESE FLOOR PLANS AND ELEVATIONS ARE ARTIST CONCEPTIONS ONLY.  
ACTUAL CONSTRUCTION MAY VARY. LANDSCAPING SHOWN IS NOT INCULDED.